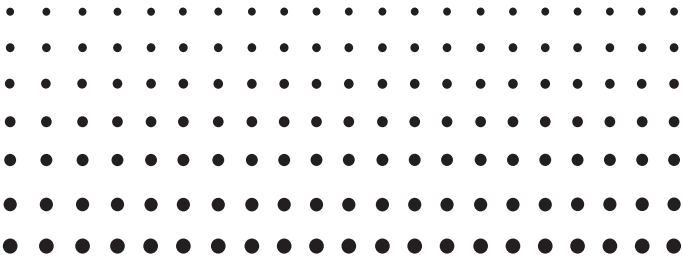
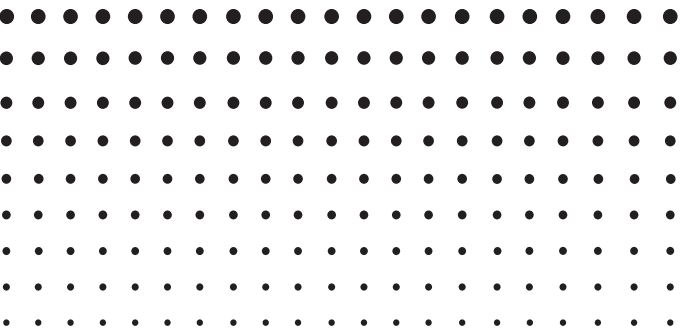


For fx-9860G Series

E



*Installing an
Add-in Application
User's Guide*




<http://world.casio.com/edu/>

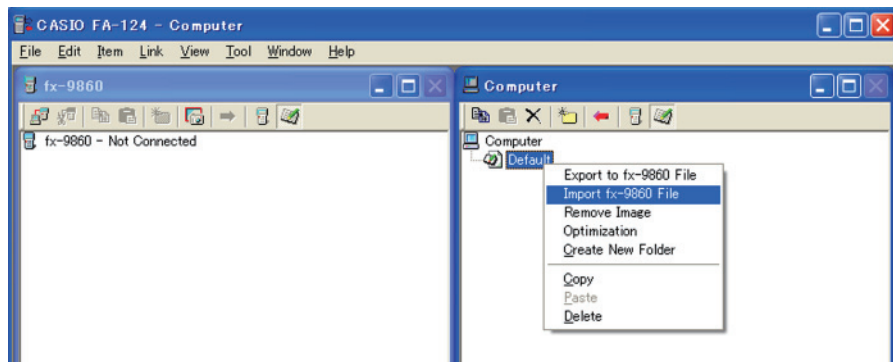
Contents

Installing an Add-in Application Using FA-124 PROGRAM-LINK..... E-2

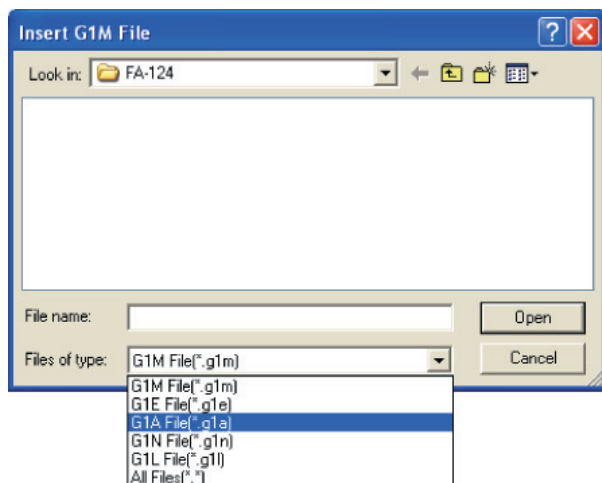
Installing an Add-in Application Using an SD Card E-6

Installing an Add-in Application Using FA-124 PROGRAM-LINK

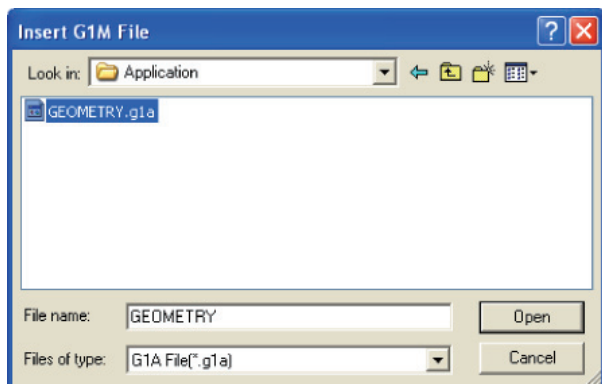
1. On your computer's desktop, double-click "FA-124".
 - This will start up FA-124 PROGRAM-LINK.
2. Click the  icon to switch to display of Storage Memory contents.
3. In the Computer window, right click "Default".



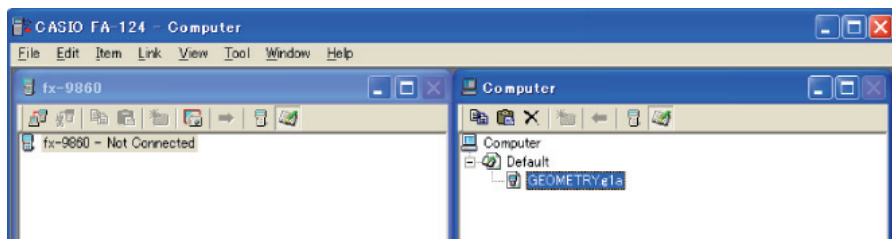
4. On the shortcut menu that appears, select "Import fx-9860 File".
 - This will display a dialog box for selecting the file you want.
5. Click the file type down arrow button and then select "G1A File(*.g1a)" on the list of file types that appears.



6. Select the add-in that you want to install.
- If you are installing an add-in from the CD-ROM (Physium, Geometry, etc.), navigate to the CD-ROM that is in your computer's CD-ROM drive and then select the add-in.

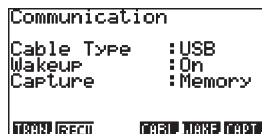



7. Click [Open].
- This should cause the imported add-in file to appear in the Computer window.



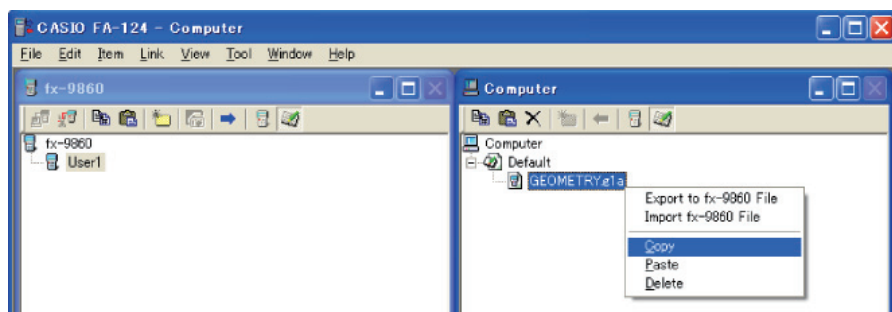
* If the "Memory Full Error" occurs, delete files in the Computer window that you no longer need. Next, right-click "Default" and then select "Optimization" from the shortcut menu that appears. After that, restart the procedure from step 3.

8. On the calculator, enter the LINK Mode, and configure the following settings: Cable Type: USB; Wakeup: On; Capture: Memory.

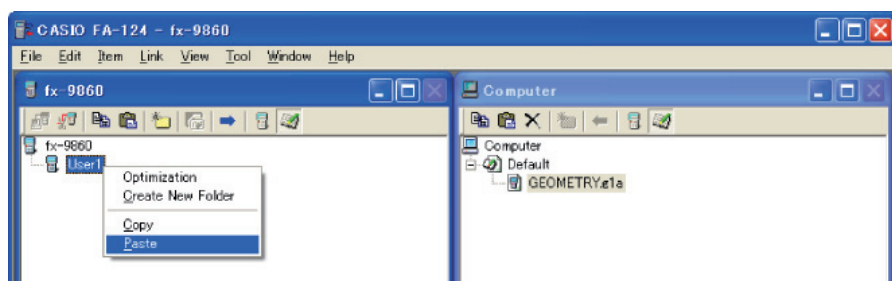


9. Use the USB cable to connect the calculator to your computer and then click the  icon.
- This will establish a connection between the calculator and FA-124 PROGRAM-LINK, and display the contents of calculator memory in the fx-9860 window.

10. In the Computer window, right-click the add-in application you want to install and then click “Copy” on the shortcut menu that appears.

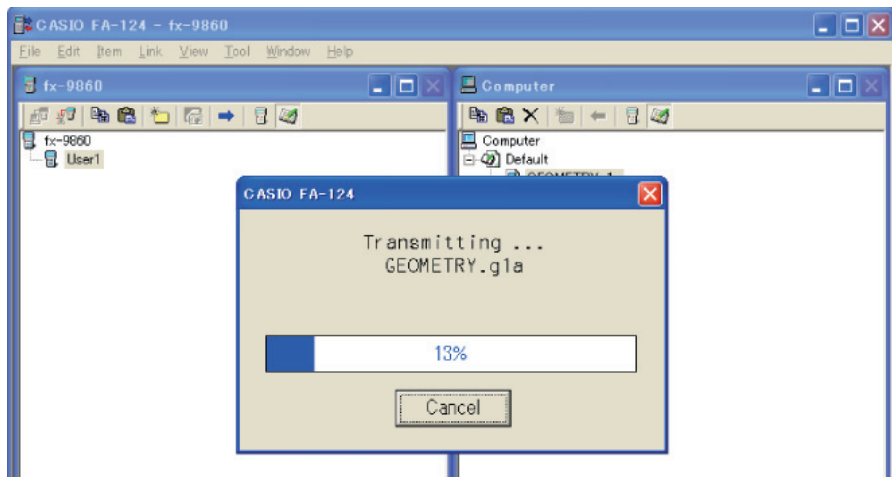


11. In the fx-9860 window, right-click the user name and then select “Paste” on the shortcut menu that appears.

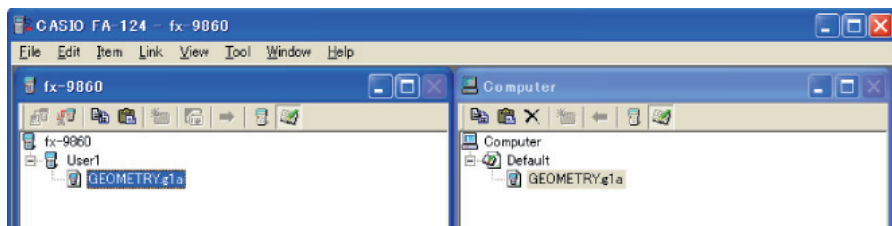


* In place of steps 10 and 11, you could also drag the add-in application from the Computer window and drop it onto the user name in the fx-9860 window.

12. The data will be copied from the Computer window to the fx-9860 window.

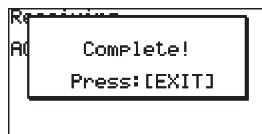


13. After the copy operation is complete, the add-in application will appear under the user name in the fx-9860 window.



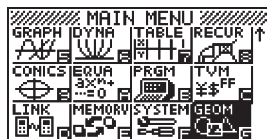
14. Click the  icon.

- This will terminate the connection between the calculator and FA-124 PROGRAM-LINK and cause the message "Complete!" to appear on the calculator display.



15. On the calculator, press the  key and then the  key.

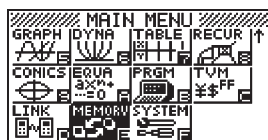
- Confirm that the add-in application's icon is on the Main Menu.



Installing an Add-in Application Using an SD Card

* This operation is supported only on models equipped with SD card capabilities.

1. Insert the SD card into an SD card drive connected to your computer.
2. Copy the add-in file (*g1a) you want to install to the SD card.
3. Insert the SD card that contains the add-in file into the calculator.
4. Enter the MEMORY Mode.



5. Press **[F3]** (SD).
 - This will display the data stored on the SD card.



6. Use the **▲** and **▼** cursor keys to move the highlighting to the add-in application you want to install.



7. Press **[F1]** (SEL).
 - This will cause **▶** to appear to the left of the file.



8. Press **[F2]** (COPY).
 - This will display the "Copy to" dialog box.



9. Press **[2]** (Storage Mem).



10. In Storage Memory, select ROOT as the destination and then press the **EXE** key.

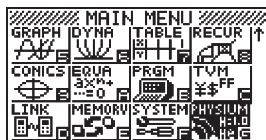
- This will cause the “Complete!” message to appear.



11. Press the **EXIT** key.

12. Press the **MENU** key.

- Confirm that the add-in application's icon is on the Main Menu.



CASIO®

CASIO COMPUTER CO., LTD.

6-2, Hon-machi 1-chome
Shibuya-ku, Tokyo 151-8543, Japan

SA0607-A